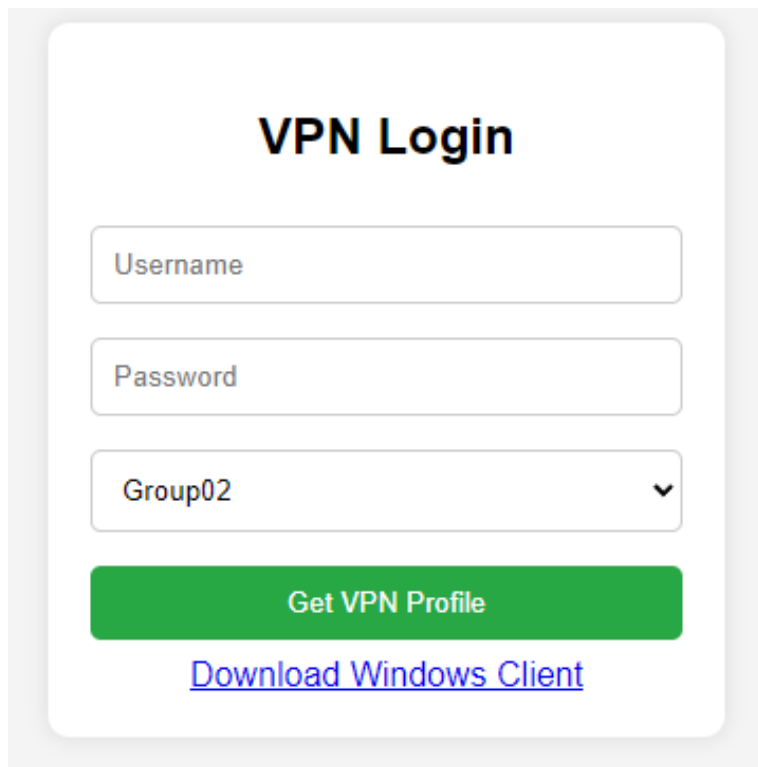


OpenVPN GUI Installation and Configuration Guide

1. Open your browser and navigate to the VPN login page.

A screenshot of a web-based VPN login form. The form is titled "VPN Login" in bold black text. It contains three input fields: "Username", "Password", and a dropdown menu labeled "Group02" with a downward arrow. Below these fields is a green button labeled "Get VPN Profile". Underneath the button is a blue hyperlink labeled "Download Windows Client". The entire form is enclosed in a light gray rounded rectangle.

2. Enter your Username and Password.

3. Select the appropriate group from the dropdown menu (e.g., Group02).

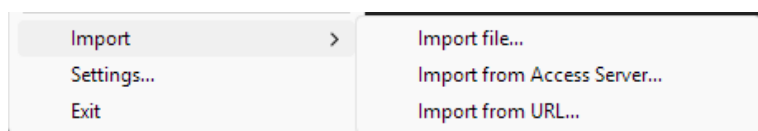
4. Click the green 'Get VPN Profile' button. This will generate and download your .ovpn profile file.

5. Click the 'Download Windows Client' link under the form to download the OpenVPN GUI installer.

6. Run the downloaded installer and follow the installation prompts to complete the setup.

7. After installation, open the OpenVPN GUI application.

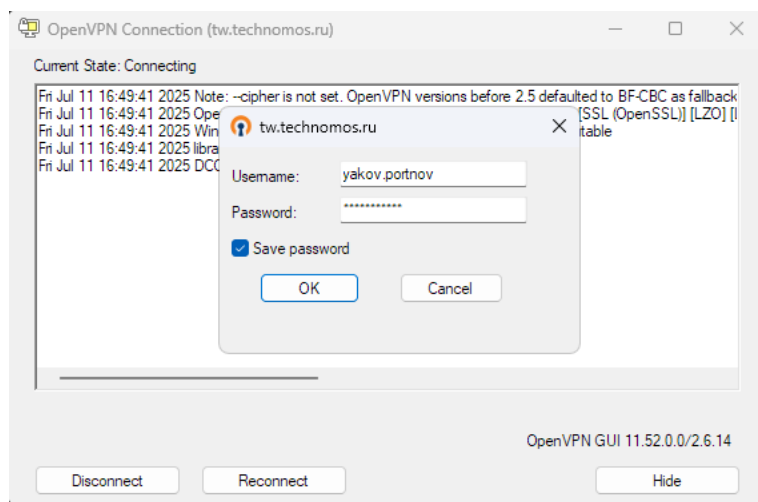
8. Right-click the OpenVPN GUI icon in the system tray and choose 'Import file...'.



9. Navigate to and select the downloaded .ovpn profile.

10. Once imported, right-click the icon again and click 'Connect'.

11. When prompted, enter your VPN username and password.



12. You should now be connected to the VPN.